

A・RA・SHI ■ Believe ■ Happiness ■ マイガール ■ Beautiful days ■ Everything ■ 明日の
 One Love ■
J-POP Stage Vol.1 ■
 Love so sweet ■ 感謝カンゲキ雨嵐 ■ truth ■ Monster ■
 WISH ■

Hr (inF) 1&2

佐藤博昭 編曲

「A・RA・SHI」

♩ = 120

Musical notation for 'A・RA・SHI'. It consists of two staves. The first staff is in treble clef with a 4/4 time signature. It starts with a 2-measure rest, followed by a first ending bracket over a 4-measure phrase. The second staff is in bass clef, providing a harmonic accompaniment with chords and eighth notes. Dynamics include *mf* and *f*.

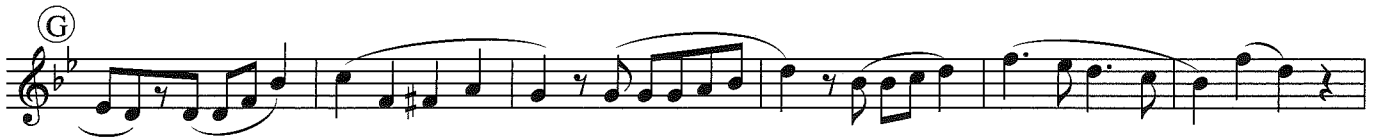
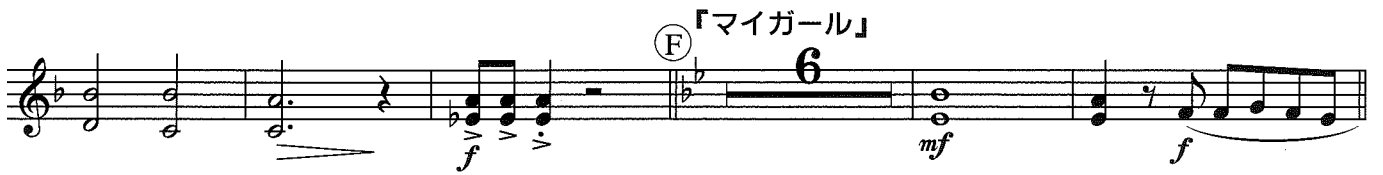
「Believe」

Musical notation for 'Believe'. It consists of three staves in treble clef with a 4/4 time signature. The first staff begins with a circled 'A' and contains a melodic line with some rests. The second staff continues the melody and includes a circled 'B'. The third staff provides a harmonic accompaniment with chords. Dynamics include *f*.

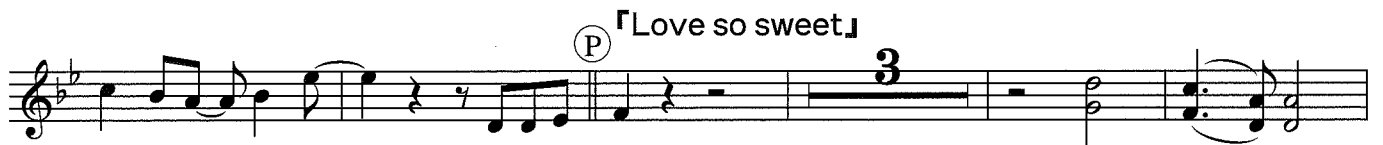
「Happiness」

Musical notation for 'Happiness'. It consists of three staves in treble clef with a 4/4 time signature. The first staff begins with a circled 'C' and contains a melodic line. The second staff continues the melody and includes a circled 'D' and a 4-measure rest. The third staff provides a harmonic accompaniment with chords and includes a circled 'E'. Dynamics include *mf* and *f*.

Hr 1&2-2



Hr 1 & 2 - 3



Mr 1 & 2 - 4

U 「truth」

Musical notation for the piece 'truth'. It consists of two staves. The first staff begins with a treble clef, a key signature of two flats (B-flat and E-flat), and a common time signature. It features a series of chords and a melodic line. The second staff continues the piece with a more active melodic line, including eighth and sixteenth notes, and is marked with '1st' and 'p' (piano).

V 「Troublemaker」

Musical notation for the piece 'Troublemaker'. It consists of two staves. The first staff begins with a treble clef, a key signature of two flats, and a common time signature. It features a series of chords and a melodic line. The second staff continues the piece with a more active melodic line, including eighth and sixteenth notes, and is marked with 'f' (forte).

W 「サクラ咲ケ」

Musical notation for the piece 'サクラ咲ケ'. It consists of two staves. The first staff begins with a treble clef, a key signature of two flats, and a common time signature. It features a series of chords and a melodic line. The second staff continues the piece with a more active melodic line, including eighth and sixteenth notes.

X 「WISH」

(♪=♩₃)

Musical notation for the piece 'WISH'. It consists of two staves. The first staff begins with a treble clef, a key signature of two flats, and a common time signature. It features a series of chords and a melodic line. The second staff continues the piece with a more active melodic line, including eighth and sixteenth notes, and is marked with 'f' (forte).

Y

Musical notation for section Y. It consists of two staves. The first staff begins with a treble clef, a key signature of two flats, and a common time signature. It features a series of chords and a melodic line. The second staff continues the piece with a more active melodic line, including eighth and sixteenth notes, and is marked with '8'.

Z 「One Love」

(♪=72 (♪=♩))

Musical notation for the piece 'One Love'. It consists of two staves. The first staff begins with a treble clef, a key signature of two flats, and a common time signature. It features a series of chords and a melodic line. The second staff continues the piece with a more active melodic line, including eighth and sixteenth notes, and is marked with 'p' (piano).

A

Musical notation for section A. It consists of two staves. The first staff begins with a treble clef, a key signature of two flats, and a common time signature. It features a series of chords and a melodic line. The second staff continues the piece with a more active melodic line, including eighth and sixteenth notes, and is marked with 'p' (piano).

B

Musical notation for section B. It consists of two staves. The first staff begins with a treble clef, a key signature of two flats, and a common time signature. It features a series of chords and a melodic line. The second staff continues the piece with a more active melodic line, including eighth and sixteenth notes, and is marked with 'p' (piano).

C

a tempo

Musical notation for section C. It consists of two staves. The first staff begins with a treble clef, a key signature of two flats, and a common time signature. It features a series of chords and a melodic line. The second staff continues the piece with a more active melodic line, including eighth and sixteenth notes, and is marked with 'f' (forte).

D

rit.

1st

♪=120

Musical notation for section D. It consists of two staves. The first staff begins with a treble clef, a key signature of two flats, and a common time signature. It features a series of chords and a melodic line. The second staff continues the piece with a more active melodic line, including eighth and sixteenth notes, and is marked with 'f' (forte).

Musical notation for the continuation of section D. It consists of two staves. The first staff begins with a treble clef, a key signature of two flats, and a common time signature. It features a series of chords and a melodic line. The second staff continues the piece with a more active melodic line, including eighth and sixteenth notes, and is marked with 'f' (forte).