

鯖江吹奏楽
Tuba

La Bamba

おとまち@福井 2022

Latin Rock ♩ = 140 - 150

Intro. All

Musical notation for the first staff of the Tuba part. It begins with a 7-measure rest, followed by a series of eighth notes and quarter notes. A dynamic marking of *mf* is placed below the staff.

Musical notation for the second staff of the Tuba part, continuing the rhythmic pattern from the first staff.

A

Musical notation for the third staff of the Tuba part, marked with section **A**. It features a sequence of eighth and quarter notes.

Musical notation for the fourth staff of the Tuba part, continuing the sequence from section A.

B

Musical notation for the fifth staff of the Tuba part, marked with section **B**. It includes triplet markings over groups of three notes.

C

Musical notation for the sixth staff of the Tuba part, marked with section **C**. It includes triplet markings over groups of three notes.

D 美浜バンド

Musical notation for the seventh staff of the Tuba part, marked with section **D** and the name "美浜バンド". It features a sequence of notes with accents.

E **F** **G**

Musical notation for the eighth staff of the Tuba part, marked with sections **E**, **F**, and **G**. It consists of rests of 7, 14, 6, and 7 measures, followed by a final musical phrase with a dynamic marking of *mf*.

La Bamba - 鯖江吹奏楽 Tuba

Ⅱ 鯖江吹奏楽

79



Ⅰ

84



89



Ⅱ

94

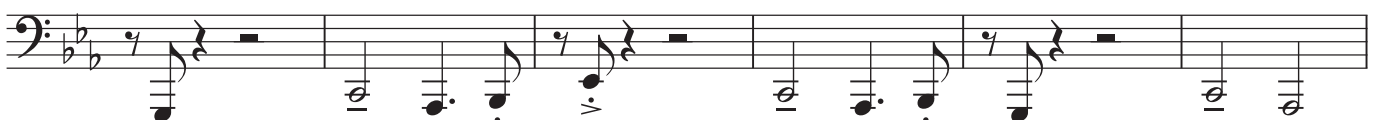


99



104

rit.

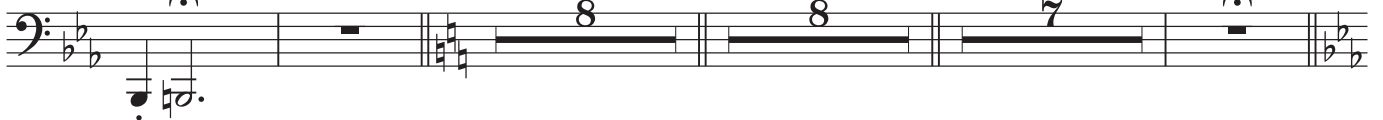


Ⅲ 若狭ウクレレ Ⅳ

Ⅴ

110

a tempo

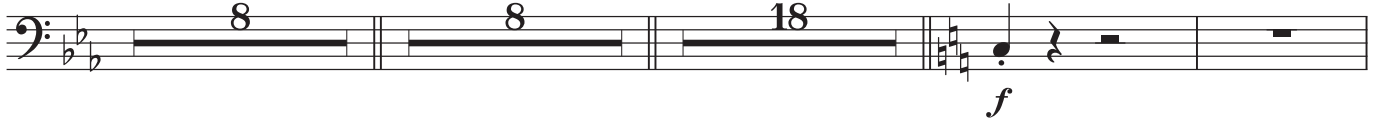


Ⅵ 越前ラテン Ⅶ

Ⅷ

Ⅷ All (+ Sax Solo)

136



Ⅸ 4 times repeat

172



La Bamba - 鱒江吹奏楽 Tuba

S

186 Solo Sax



192



198



203



208



U

213



218



223



228

