

# Percussion 2

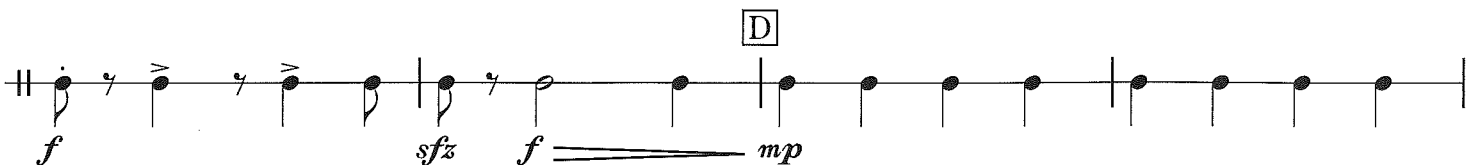
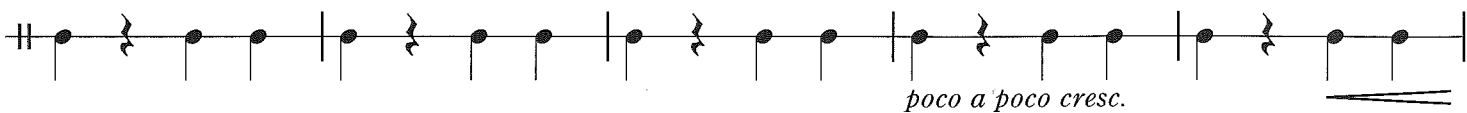
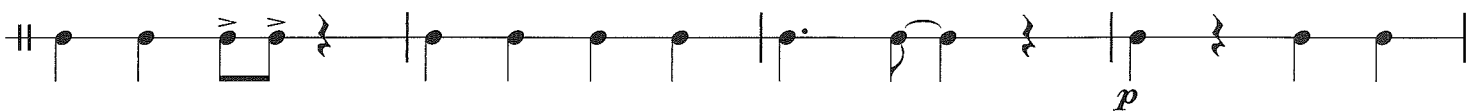
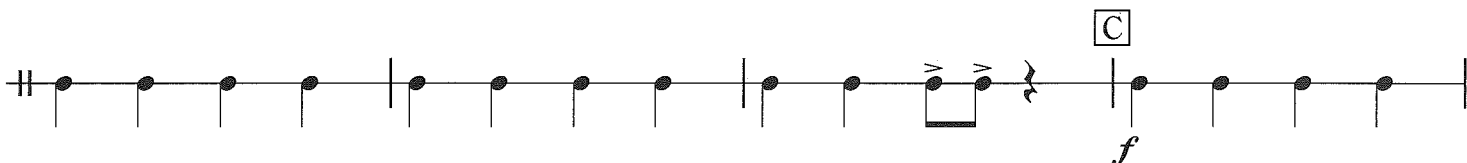
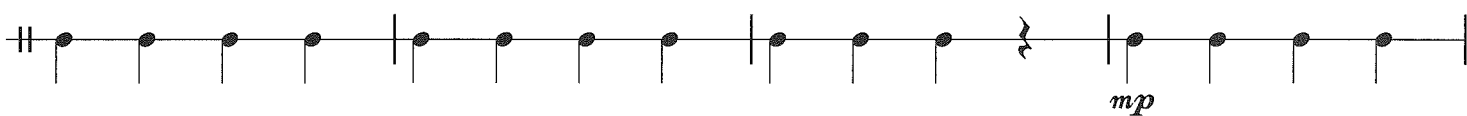
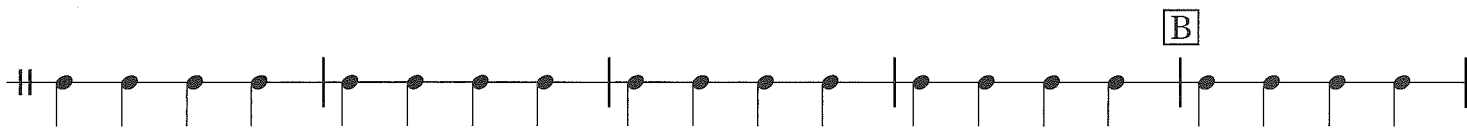
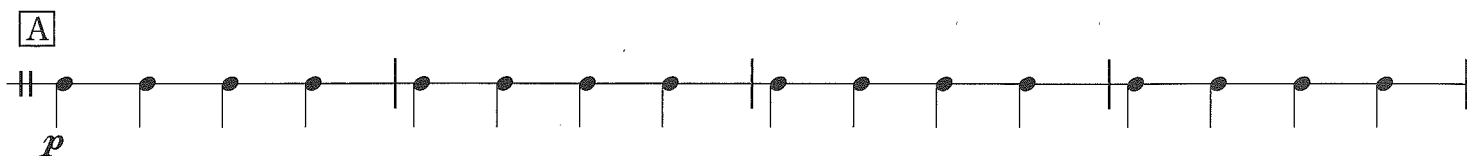
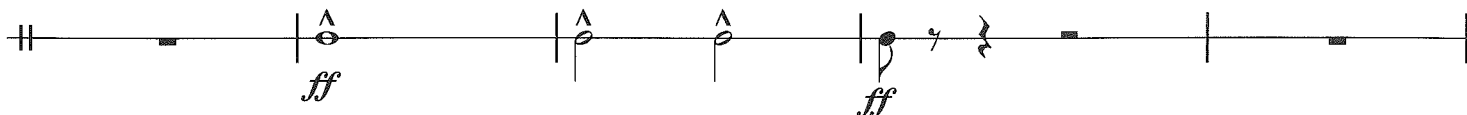
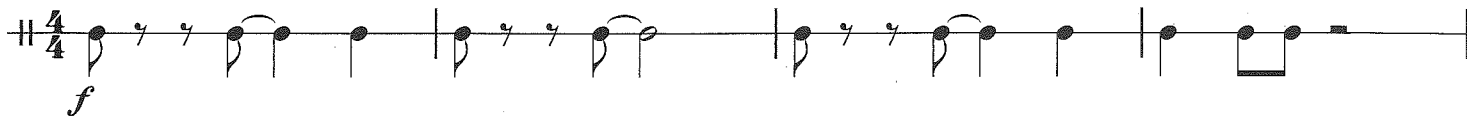
Bass Drum

## マーチ「ブルースカイ」

March "Blue Sky"

高木 登古  
TAKAGI, Tohko

Bright March ♩ = 132 ca.



Percussion 2

Trio

mf *ff*

A musical staff with a treble clef and a key signature of one sharp (F#). It contains a sequence of quarter notes: G4, A4, B4, C5, D5, E5, F#5, G5. There is a double bar line after the first four notes. The first four notes are marked *mf*. The last two notes (F#5 and G5) are marked *ff* and have accents (>) above them. A double line under the staff indicates a crescendo leading to the *ff* dynamic.

E *p*

A musical staff with a treble clef and a key signature of one sharp (F#). It contains a sequence of quarter notes: G4, A4, B4, C5, D5, E5, F#5, G5. There is a double bar line after the first four notes. The notes are marked *p*.

A musical staff with a treble clef and a key signature of one sharp (F#). It contains a sequence of quarter notes: G4, A4, B4, C5, D5, E5, F#5, G5. There is a double bar line after the first four notes.

A musical staff with a treble clef and a key signature of one sharp (F#). It contains a sequence of quarter notes: G4, A4, B4, C5, D5, E5, F#5, G5. There is a double bar line after the first four notes.

A musical staff with a treble clef and a key signature of one sharp (F#). It contains a sequence of quarter notes: G4, A4, B4, C5, D5, E5, F#5, G5. There is a double bar line after the first four notes. The staff ends with a fermata over the final note.

F *f*

A musical staff with a treble clef and a key signature of one sharp (F#). It contains a sequence of quarter notes: G4, A4, B4, C5, D5, E5, F#5, G5. There is a double bar line after the first four notes. The notes are marked *f*. There are rests of one quarter note after the first and fifth notes. The last two notes (F#5 and G5) have accents (>) above them.

G *mf cresc.* *ff*

A musical staff with a treble clef and a key signature of one sharp (F#). It contains a sequence of quarter notes: G4, A4, B4, C5, D5, E5, F#5, G5. There is a double bar line after the first four notes. The notes are marked *mf cresc.*. The last two notes (F#5 and G5) are marked *ff*. A double line under the staff indicates a crescendo leading to the *ff* dynamic.

*sfz* *sfz*

A musical staff with a treble clef and a key signature of one sharp (F#). It contains a sequence of quarter notes: G4, A4, B4, C5, D5, E5, F#5, G5. There is a double bar line after the first four notes. The last two notes (F#5 and G5) have accents (^) above them and are marked *sfz*. A double line under the staff indicates a crescendo leading to the *sfz* dynamic.

H *ff*

A musical staff with a treble clef and a key signature of one sharp (F#). It contains a sequence of quarter notes: G4, A4, B4, C5, D5, E5, F#5, G5. There is a double bar line after the first four notes. The notes are marked *ff*.

I *sfz* *sfz*

A musical staff with a treble clef and a key signature of one sharp (F#). It contains a sequence of quarter notes: G4, A4, B4, C5, D5, E5, F#5, G5. There is a double bar line after the first four notes. The notes are marked *sfz*. There are rests of one quarter note after the fifth and sixth notes. The last two notes (F#5 and G5) have accents (^) above them. A double line under the staff indicates a crescendo leading to the *sfz* dynamic.

*sfz* *sfz*

A musical staff with a treble clef and a key signature of one sharp (F#). It contains a sequence of quarter notes: G4, A4, B4, C5, D5, E5, F#5, G5. There is a double bar line after the first four notes. The notes are marked *sfz*. There are rests of one quarter note after the sixth and seventh notes. The last two notes (F#5 and G5) have accents (>) above them.