

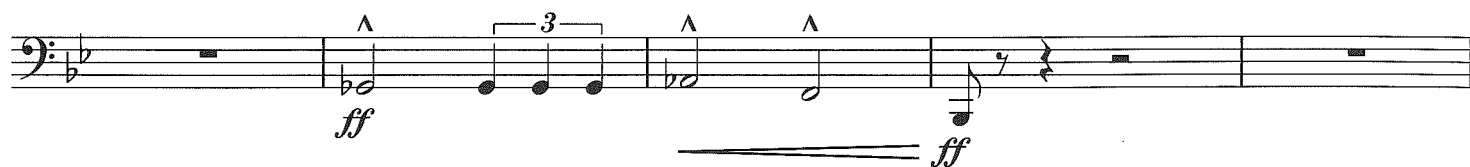
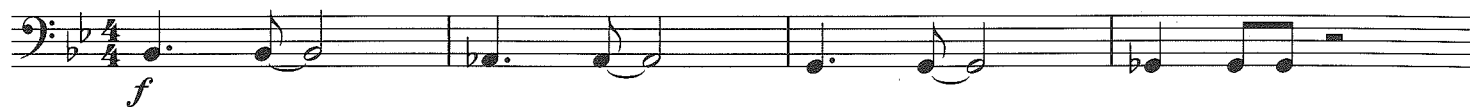
Tuba

マーチ「ブルースカイ」

March "Blue Sky"

高木 登古
TAKAGI, Tohko

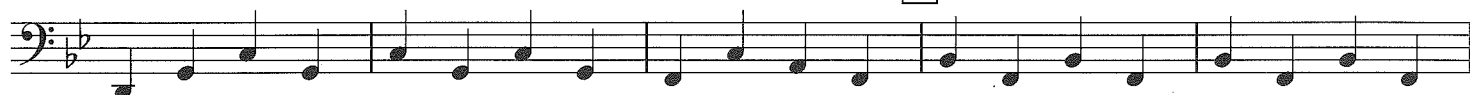
Bright March ♩ = 132 ca.



A



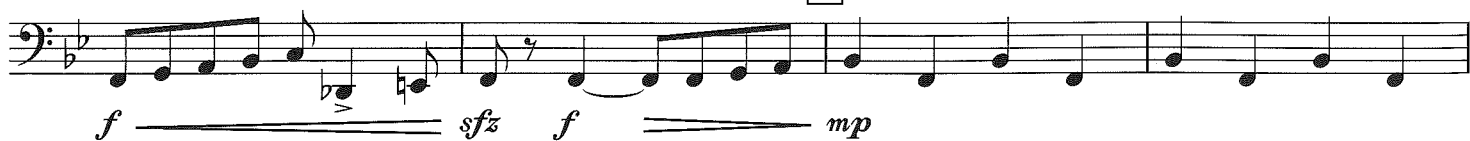
B



C



D



Tuba

Trio

First staff of music in bass clef, key signature of two flats. It begins with a dynamic marking of *mf*. The staff contains a sequence of eighth notes, followed by a double bar line and a section of eighth notes with accents and a dynamic marking of *ff*.

E

Second staff of music in bass clef, key signature of two flats. It begins with a dynamic marking of *p* and contains a sequence of eighth notes.

Third staff of music in bass clef, key signature of two flats. It contains a sequence of eighth notes.

Fourth staff of music in bass clef, key signature of two flats. It contains a sequence of eighth notes.

F

Fifth staff of music in bass clef, key signature of two flats. It contains a sequence of eighth notes, ending with a dynamic marking of *ff marc.*

Sixth staff of music in bass clef, key signature of two flats. It contains a sequence of eighth notes with a dynamic marking of *mf cresc.*

G

Seventh staff of music in bass clef, key signature of two flats. It contains a sequence of eighth notes, ending with a dynamic marking of *ff*.

Eighth staff of music in bass clef, key signature of two flats. It contains a sequence of eighth notes.

H

Ninth staff of music in bass clef, key signature of two flats. It contains a sequence of eighth notes, ending with a dynamic marking of *ff*.

I

Tenth staff of music in bass clef, key signature of two flats. It contains a sequence of eighth notes, ending with four accented eighth notes.

Eleventh staff of music in bass clef, key signature of two flats. It contains a sequence of eighth notes, ending with a dynamic marking of *ff*.