

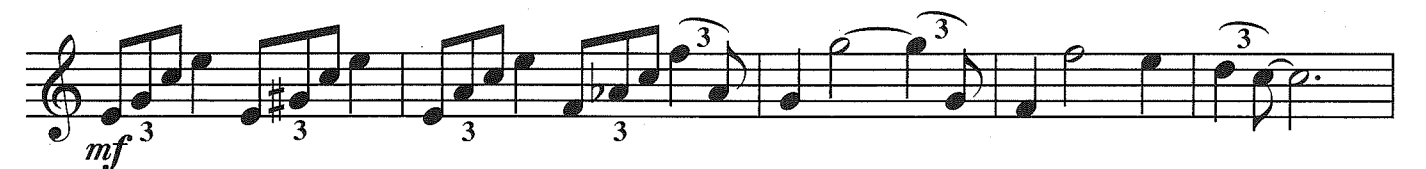
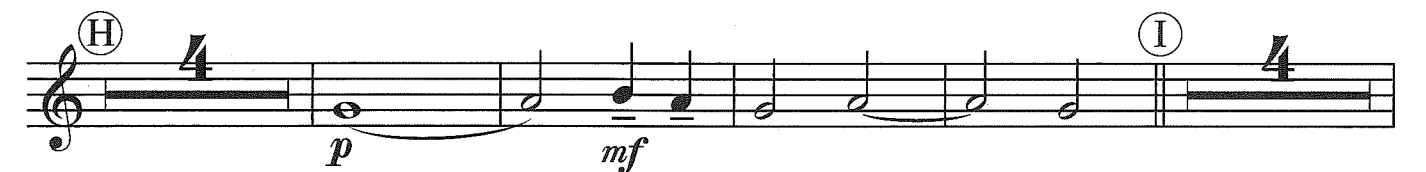
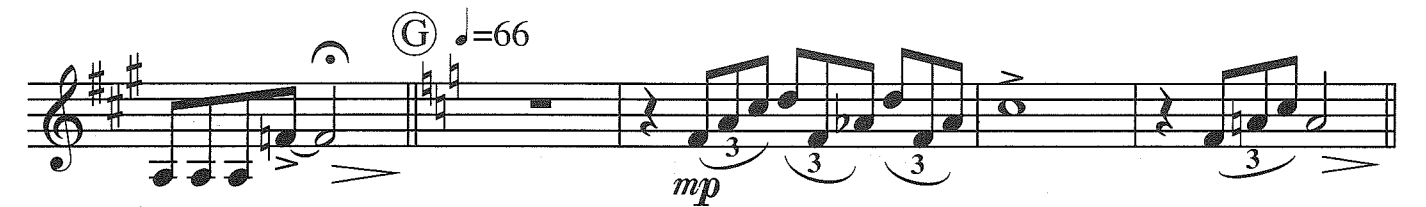
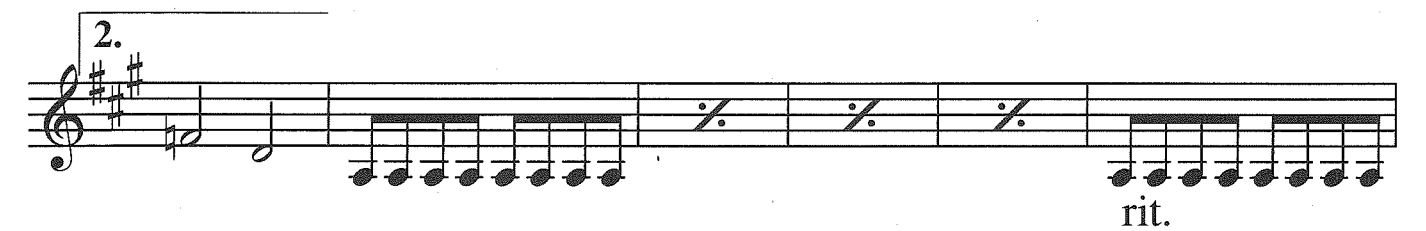
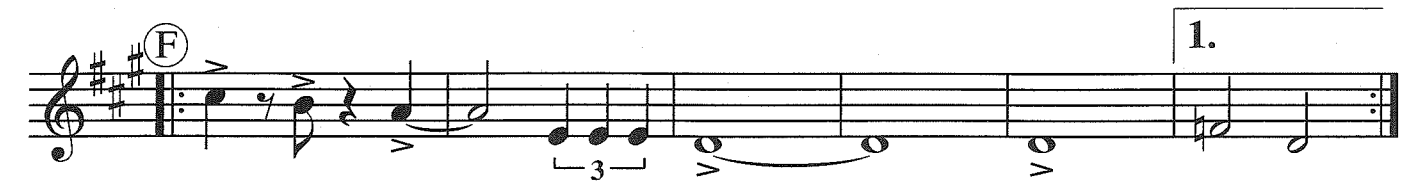
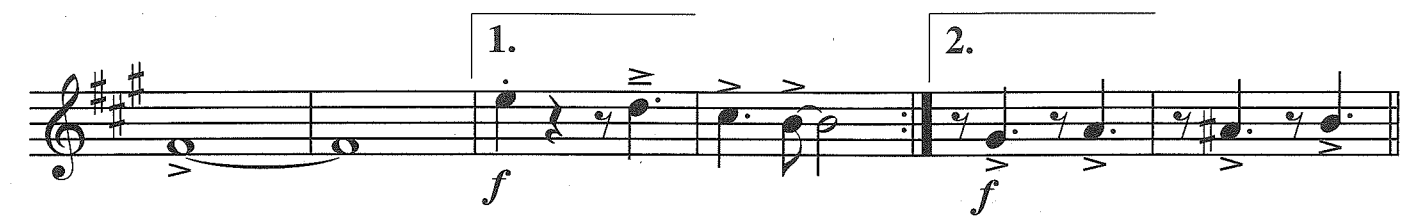
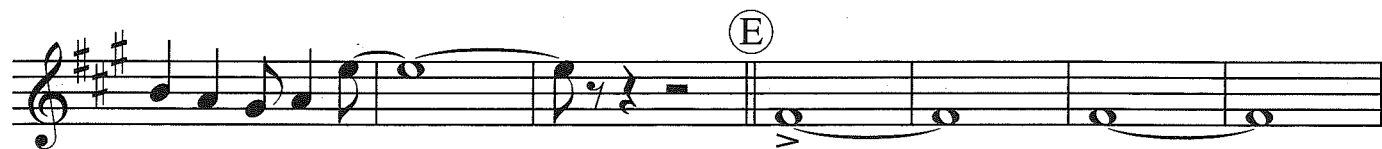
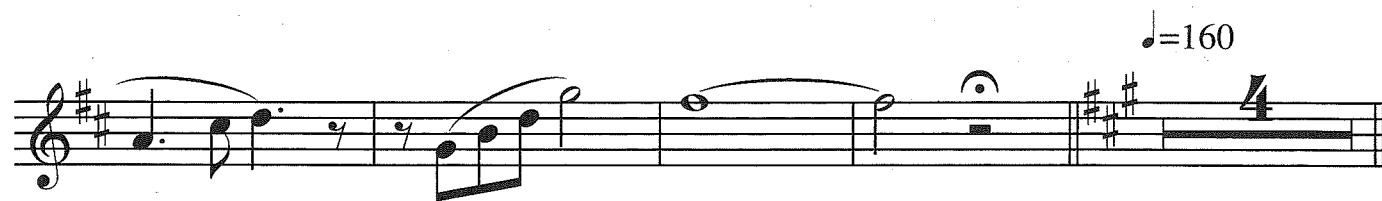
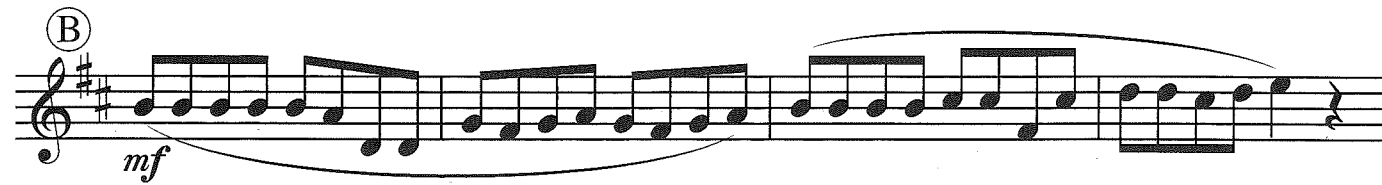
松田聖子ラブリーコレクション 鯖江市鯖江中学校

赤いスイートピー・夏の扉・SWEET MEMORIES・風立ちぬ・青い珊瑚礁・あなたに逢いたくて~Missing You~

山下国俊編曲

A.C1

♩=96



赤いスイートピー
夏の扉
SWEET MEMORIES
風立ちぬ
青い珊瑚礁
あなたに逢いたくて
~Missing You~

呉田軽穂 作曲 © 1982 by Sun Music Publishing, Inc.
財津和夫 作曲 © 1981 by Sun Music Publishing, Inc.
大村雅朗 作曲 © 1983 by Sun Music Publishing, Inc.
大瀧詠一 作曲 © 1981 by Sun Music Publishing, Inc.
小田裕一郎 作曲 © 1980 by Sun Music Publishing, Inc.
松田聖子 作曲 © 1996 by TV ASAHI MUSIC CO., LTD. &
小倉良 OFFICE TWO - ONE INC. & Fantic Co.Ltd

Musical score for page 3, measures 1-10. The score is in treble clef with a key signature of one sharp (F#). It features various dynamics including *mf*, *f*, and *mp*. Performance markings include a trill (K), a fermata (L), and first/second endings (1., 2.). A triplet of eighth notes is marked with a '3' and a fermata. A repeat sign with '2nd time' is present in measure 6. A fermata (M) is placed over the first ending. A fermata (N) is placed over the second ending. A fermata (O) is placed over the final measure.

Musical score for page 4, measures 1-10. The score is in treble clef with a key signature of one sharp (F#). It features various dynamics including *mf*, *f*, and *sfp*. Performance markings include a triplet (P), a fermata (Q), a tempo marking of $\text{♩} = 76$, and a *simile* instruction. A fermata (R) is placed over a series of eighth notes. A fermata (S) is placed over a triplet. A fermata (T) is placed over a final measure. The piece concludes with a *molto* marking.